

UBE2V2 Antibody (Center)
Affinity Purified Rabbit Polyclonal Antibody (Pab)
Catalog # AP17212c

Specification

UBE2V2 Antibody (Center) - Product Information

Application	WB,E
Primary Accession	Q15819
Other Accession	Q7M767 , Q9D2M8 , Q3SZ43 , NP_003341.1
Reactivity	Human
Predicted	Bovine, Mouse, Rat
Host	Rabbit
Clonality	Polyclonal
Isotype	Rabbit IgG
Calculated MW	16363
Antigen Region	75-104

UBE2V2 Antibody (Center) - Additional Information

Gene ID 7336

Other Names

Ubiquitin-conjugating enzyme E2 variant 2, DDVit 1, Enterocyte differentiation-associated factor 1, EDAF-1, Enterocyte differentiation-promoting factor 1, EDPF-1, MMS2 homolog, Vitamin D3-inducible protein, UBE2V2, MMS2, UEV2

Target/Specificity

This UBE2V2 antibody is generated from rabbits immunized with a KLH conjugated synthetic peptide between 75-104 amino acids from the Central region of human UBE2V2.

Dilution

WB~~1:1000

E~~Use at an assay dependent concentration.

Format

Purified polyclonal antibody supplied in PBS with 0.09% (W/V) sodium azide. This antibody is purified through a protein A column, followed by peptide affinity purification.

Storage

Maintain refrigerated at 2-8°C for up to 2 weeks. For long term storage store at -20°C in small aliquots to prevent freeze-thaw cycles.

Precautions

UBE2V2 Antibody (Center) is for research use only and not for use in diagnostic or therapeutic procedures.

UBE2V2 Antibody (Center) - Protein Information

Name UBE2V2

Synonyms MMS2, UEV2

Function Has no ubiquitin ligase activity on its own. The UBE2V2/UBE2N heterodimer catalyzes the synthesis of non-canonical poly-ubiquitin chains that are linked through 'Lys-63'. This type of poly- ubiquitination does not lead to protein degradation by the proteasome. Mediates transcriptional activation of target genes. Plays a role in the control of progress through the cell cycle and differentiation. Plays a role in the error-free DNA repair pathway and contributes to the survival of cells after DNA damage.

Tissue Location

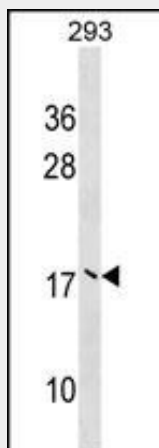
Detected in placenta, colon, liver and skin. Detected at very low levels in most tissues

UBE2V2 Antibody (Center) - Protocols

Provided below are standard protocols that you may find useful for product applications.

- [Western Blot](#)
- [Blocking Peptides](#)
- [Dot Blot](#)
- [Immunohistochemistry](#)
- [Immunofluorescence](#)
- [Immunoprecipitation](#)
- [Flow Cytometry](#)
- [Cell Culture](#)

UBE2V2 Antibody (Center) - Images



UBE2V2 Antibody (Center) (Cat. #AP17212c) western blot analysis in 293 cell line lysates (35ug/lane). This demonstrates the UBE2V2 antibody detected the UBE2V2 protein (arrow).

UBE2V2 Antibody (Center) - Background

Ubiquitin-conjugating enzyme E2 variant proteins constitute a distinct subfamily within the E2 protein family. They have sequence similarity to other ubiquitin-conjugating enzymes but lack the conserved cysteine residue that is critical for the catalytic activity of E2s. The protein encoded by this gene also shares homology with ubiquitin-conjugating enzyme E2 variant 1 and

yeast MMS2 gene product. It may be involved in the differentiation of monocytes and enterocytes.

UBE2V2 Antibody (Center) - References

Wen, R., et al. Plant Cell 20(1):213-227(2008)
Brun, J., et al. BMC Mol. Biol. 9, 24 (2008) :
Pastushok, L., et al. FEBS Lett. 581(28):5343-5348(2007)
Zhao, G.Y., et al. Mol. Cell 25(5):663-675(2007)
Wen, R., et al. Plant Mol. Biol. 61 (1-2), 241-253 (2006) :